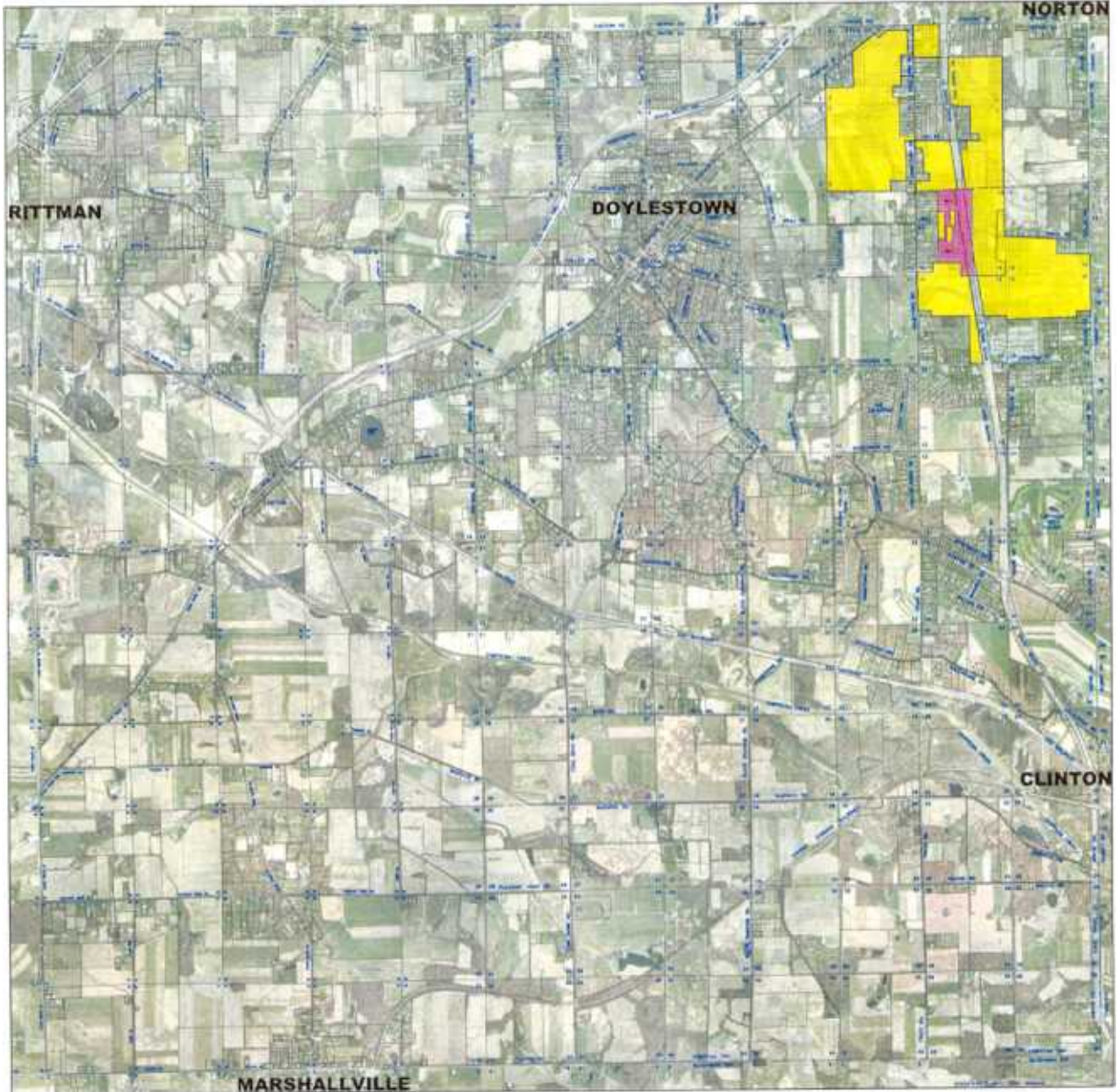


VILLAGE OF DOYLESTOWN & CHIPPEWA TOWNSHIP JEDD



M-1 RESTRICTED INDUSTRIAL DISTRICT

	INITIAL JEDD AREA:	49.6 ACRES
	POTENTIAL JEDD AREA:	701.1 ACRES
	TOTAL JEDD AREA:	750.7 ACRES

DATE: 21 JAN, 2008

